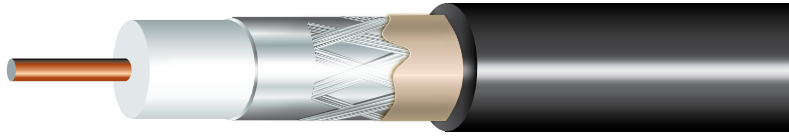


CATV COAXIAL CABLES | Outdoor



COAXIAL CABLES

TYPE	SHIELD	PART NO.	AWG	NOMINAL OD (INCH)		JACKET TYPE	SHIP WT / 1M'
				CORE	CABLE		
RG 6	Foil + 60% AL	4061PE	18 CCS	.180	.270	PE	29
	WB Tape + 60% AL	4-4068WB	18 BC	.180	.277	Direct Burial PVC	31
	Foil + 60% AL + WB Gel	4061FPE	18 CCS	.180	.270	PE	30
	WB Tape + 60% AL	4-4061WB	18 CCS	.180	.270	Direct Burial PVC	31
	Foil + 60% AL Foil + 40% AL + WB Gel	4-4061QSFPE	18 CCS	.180	.300	PE	37
RG 11	97% BC	4011PE	14 BC	.280	.405	PE	76
	Foil + 60% AL	4111PE	14 CCS	.280	.405	PE	56
	95% BC + WB Gel	4011FPE	14 BC	.280	.405	PE	77
	WB Tape + 95% BC	4-4011WB	14 BC	.280	.405	Direct Burial PVC	77

The information contained on this specification is intended to be used as a guide and every effort has been made to ensure its accuracy at time of publication. This specification is subject to change anytime without notice. Please refer to www.adcable.com for the most up to date information. Rev 0419

PRODUCT DESCRIPTION

Foamed dielectric core over solid copper or copper covered steel center conductor, aluminum or copper braid shield, overall black jacket*.

APPLICATIONS

- Audio/Video
- CATV

SPECIFICATIONS

Nominal Impedance 75 Ohm
Nominal Velocity of Propagation 84
Nominal Capacitance 15.8
Temp. Rating -39°C to +75°C
Attenuation see chart on page 47
 (RG6 & RG11 are 3GHz swept tested)

AVAILABLE PUT-UPS

1,000' Reels and Boxes
 500' Reels and Boxes
 Other lengths available. Please consult your factory representative for availability.

CABLE IDENTIFICATION

RG X XX AWG OUTDOOR

*Other colors available upon request. Please consult factory for minimums and lead times.



(800) 343 2579 • www.adcable.com